

### COMMERCIAL - MUNICIPAL & SPORTS TURF ROTORS

#### 7000/7010E

7000-Pro Standard with ADV

#### 7000RW/7010ERW

7000-Pro for Reclaimed Water & ADV

#### 7005/7015E

7000-Pro Standard with stainless steel riser and ADV

Note: "E" versions ( or versions in parenthesis) feature BSP threading

7000



7005



7000RW



#### Accessories

##### 6101

Sod Cup Kit

##### 6102

Lavender Cover

##### 6097

Wrench

6097



6101



6102



#### SPECIFICATIONS

##### OPERATING RANGE:

40-90 psi (2,7 – 6,2 bar)

##### MAXIMUM PRESSURE:

100 psi (6,9 bar)

##### DISCHARGE:

5.6 to 19.6 gpm (1,27 – 4,45 m<sup>3</sup>/hr)

##### SPRAY TRAJECTORY:

25°

##### POP-UP HEIGHT:

4½" (11,4 cm)

##### BODY HEIGHT:

9½" (24,1 cm)

##### EXPOSED CAP DIAMETER:

2½" (6,3 cm)

##### TYPE OF CAP:

Rubber with locking screw

##### INLET SIZE:

1" (25,4 mm) female NPT (7000, 7015)  
1" (25,4 mm) female BSP (7010E, 7015E)

##### SCREEN MESH:

.045 sq. in. (1,14 mm<sup>2</sup>) / 1150 micron

##### ADV MODELS:

Holds back up to 10' (3 m) difference in elevation

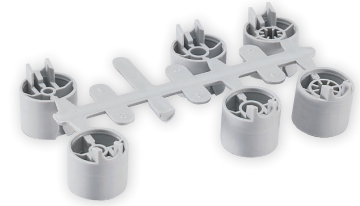
##### # PER BOX:

10

**7000 PRO SERIES**

25° trajectory (Part Numbers - 77578)

Nozzle color



**FEATURES**

- Bayonet protective cap.
- NIR<sup>2</sup> feature (Nozzle Insertion/Radius Reduction) on all models eliminates the need to remove the cap for nozzle adjustments.
- Six interchangeable Acu-Cover nozzles ranging from 5.6 to 19.6 gpm (1,27 – 4,45 m<sup>3</sup>/hr).
- Rubber cap has two locking screws for vandal protection.
- Click-Set<sup>®</sup> collars are quick and easy to adjust.
- Gear drive may be installed ½" (1,3 cm) below grade.
- Proven reliability of the water driven gear motor.
- Continuous 360° rotation or part-circle adjustable 40° to 310°.
- Heavy-duty case with stabilizer ribs increases stability even in loose soil.
- Ratcheting slip clutch protects gears and motor from damage while adjusting turret for part-circle adjustments - wet or dry.
- Wrench, piston clamp and installation instructions included.

Pressure	Max Radius	Min Radius	Discharge	Precipitation Rate <sup>1</sup>		Nozzle Number	Pressure	Max Radius	Min Radius	Discharge	Precipitation Rate <sup>1</sup>			
				IN/HR	IN/HR▲						BAR	kPa	m	m
45	41	31	5.6	0.64	0.74	1	3.1	310	12.5	9.4	21.2	1.27	16.3	18.8
60	42	32	5.9	0.64	0.74		4.1	414	12.8	9.6	22.3	1.34	16.4	18.9
75	42	32	7.2	0.79	0.91		5.2	517	12.8	9.6	27.3	1.64	20.0	23.0
90	43	32	7.8	0.81	0.94		6.2	621	13.1	9.8	29.5	1.77	20.6	23.8
45	48	36	6.9	0.58	0.67	2	3.1	310	14.6	11.0	26.1	1.57	14.6	16.9
60	49	37	7.8	0.63	0.72		4.1	414	14.9	11.2	29.5	1.77	15.9	18.3
75	49	37	8.9	0.71	0.82		5.2	517	14.9	11.2	33.7	2.02	18.1	20.9
90	50	38	9.8	0.75	0.87		6.2	621	15.2	11.4	37.1	2.23	19.2	22.1
45	52	39	8.7	0.62	0.72	3	3.1	310	15.9	11.9	32.9	1.98	15.7	18.2
60	53	40	9.9	0.68	0.78		4.1	414	16.2	12.1	37.5	2.25	17.2	19.9
75	53	40	11.3	0.77	0.89		5.2	517	16.2	12.1	42.8	2.57	19.7	22.7
90	54	41	12.4	0.82	0.95		6.2	621	16.5	12.3	46.9	2.82	20.8	24.0
45	54	41	10.7	0.71	0.82	4	3.1	310	16.5	12.3	40.5	2.43	17.9	20.7
60	55	41	12.2	0.78	0.90		4.1	414	16.8	12.6	46.2	2.77	19.7	22.8
75	56	42	14.0	0.86	0.99		5.2	517	17.1	12.8	53.0	3.18	21.8	25.2
90	58	44	15.3	0.88	1.01		6.2	621	17.7	13.3	57.9	3.48	22.2	25.7
45	55	41	11.5	0.73	0.85	5	3.1	310	16.8	12.6	43.5	2.61	18.6	21.5
60	57	43	13.2	0.78	0.90		4.1	414	17.4	13.0	50.0	3.00	19.9	22.9
75	57	43	15.1	0.89	1.03		5.2	517	17.4	13.0	57.2	3.43	22.7	26.2
90	59	44	16.4	0.91	1.05		6.2	621	18.0	13.5	62.1	3.73	23.0	26.6
45	56	42	13.7	0.84	0.97	6	3.1	310	17.1	12.8	51.9	3.11	21.4	24.7
60	59	44	15.7	0.87	1.00		4.1	414	18.0	13.5	59.4	3.57	22.1	25.5
75	61	46	18.8	0.97	1.12		5.2	517	18.6	13.9	71.2	4.27	24.7	28.5
90	63	47	19.6	0.95	1.10		6.2	621	19.2	14.4	74.2	4.45	24.1	27.9

<sup>1</sup> Precipitation rates for square and triangular spacing calculated at 50% of diameter for half-circle operation. Assumes zero wind for precipitation and radius. Adjust for local conditions.

**ROTORS**



**SIGNATURE CONTROL SYSTEMS, INC.**

[www.SignatureControlSystems.com](http://www.SignatureControlSystems.com)

**WORLD HEADQUARTERS**  
18 Goodyear • Suite 110  
Irvine • California • 92618  
Tel: 949.580.3640  
Fax: 949.580.3645

**MANUFACTURING FACILITY**  
8800 N.Allen Rd.,  
Peoria • Illinois • 61615  
Tel: 949.580.3640  
Fax: 949.580.3645

**EUROPE & MIDDLE EAST**  
5 rue de la Vallée Yart  
78640 Saint Germain de la Grange  
France  
Tel: +33.13.489.9056  
Fax: +33.13.489.6025

**REGIONAL OFFICES**  
**ASIA**  
NanXian Plaza • MinZhi Street • Shenzhen,  
Guangdong Province • 518131  
Tel: (86) 136.00419465 • Fax: (86) 755.83275012  
**SOUTH AMERICA**  
Av Paseo Los Bravos 6000 • Lo Barnechea  
Santiago • Chile  
Tel/Fax: +56 229.556220

**MEXICO, CENTRAL AMERICA**  
Ribera Escondida 118 • Riberas Del Campestre  
38080 Celaya • Gto. • Mexico  
Tel/Fax: +52 (461) 614.2322  
**AFRICA**  
P.O. Box 1260 • Strubensvalley 1735  
Rooodepoort • South Africa  
Office & Mobile: +27 82 553 9093 • Fax: 086 670 6318

**USA Toll Free: 866.4SIGNATURE**