

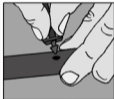
1. Plan your system. Where will you place the 13mm poly tube to distribute the water? Where will you cut the tube? Before you start, uncoil the tube & lay it out in the sun to soften & make it easier to handle.

2. Lay out the 13mm poly tube according to your plan. To change direction or add another route, cut the tube and use the elbows and tees.

3. Attach the pressure regulator to the garden tap (or the tap timer if you have one fitted). Use the tap adaptor if the tap connection is too large. NOTE: If the water is non-potable, you may need filtration.

4. Screw the 1/2" nut & tail onto the pressure regulator & connect the 13mm poly tube onto the tail, securing it with the ratchet clamp. TIP: It is easier to push the tube onto fittings if you CAREFULLY dip the end of the tube into a container of hot water for a few seconds.

5. Using the Key Punch supplied, make a hole in the 13mm poly tube where you want an emitter to be placed.



6. Break off the adaptor from the side of the Spectrum Spike.

7. Push the soft 4mm uPVC tube onto the end of the adaptor, then push the adaptor into the hole in the 13mm poly tube.

8. Cut the 4mm tube to a suitable length then push it onto the barb on the Spectrum Spike.

9. Push the Spectrum Spike into the soil near the plant so that the water will wet the rootzone effectively. Install further Spectrum Spikes until you have completed the installation according to your plan.

10. If you change your mind about the location of an emitter after punching the hole, insert a Goof Plug to block the opening.



11. Now secure the 13mm poly tube by pushing Hold Down Stakes into the soil at regular intervals along the tube.

12. Before you install the End Plugs to seal the ends of the 13mm poly tube, turn on the tap & flush out any pieces of plastic or soil. Turn off the tap and insert the End Plugs.

13. Finally, with the water turned on, rotate the cap of each Spectrum Spike to get the desired wetting performance. You have now successfully installed your Spectrum Spike system.

INSTRUCTIONS FOR INSTALLING SPECTRUM™ SPIKES



ANTELCO
Putting water where it counts!®